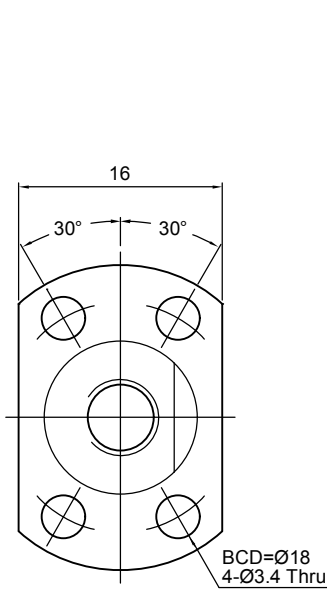
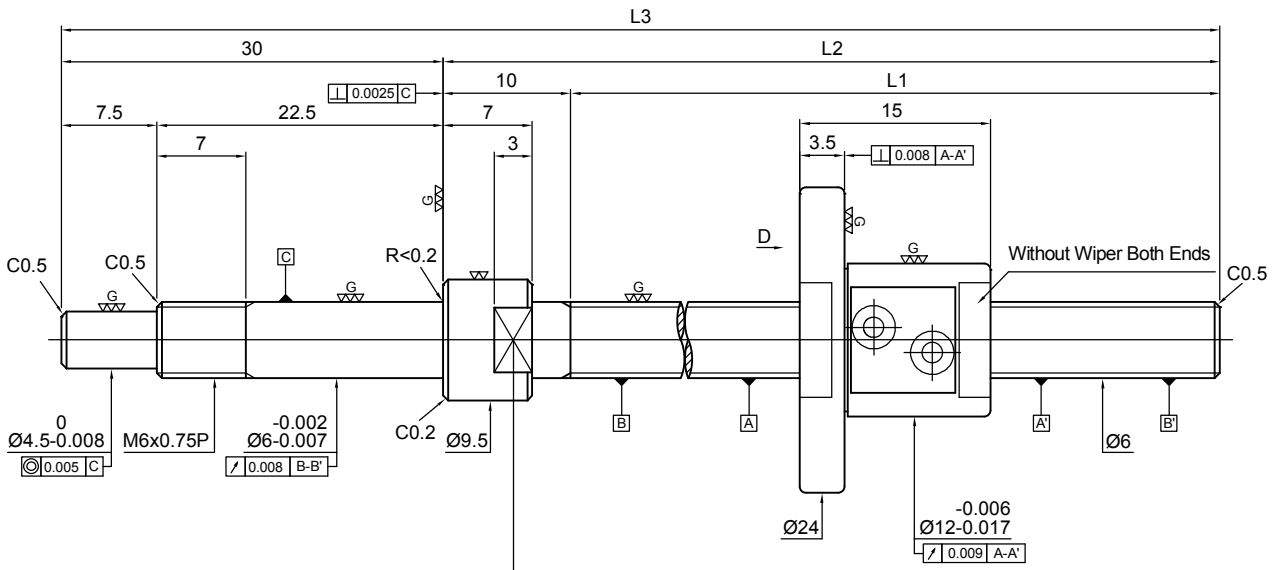


Specification of ball screw

Production Specification	With Preload	Without Preload
Number of Thread / Thread Direction	1/Right	
BCD	4.1	
Lead	1	
Ball Dia.	0.8	
Effective Turns (Circuit × Row)	2.5 × 1	
Lead Angle	4.44	
Dynamic Rate Load Ca (kgf)	49	
Static Rate Load Co (kgf)	70	
Axial Play	0	0.005 or less
Preloading Torque (kgf-cm)	0.01~0.1	0.03 or less

Unit: mm

Model No.	Screw Spindle (Shaft) Length			Accuracy Grade	Lead Accuracy		
	L1	L2	L3		Specified Travel (T)	Accumulated reference lead deviation E	Lead Deriation in random 300mm e_{300}
FSM0401-C3-1R-0085	44	55	85	3	0	0.012	0.008
FSM0401-C3-1R-0105	64	75	105	3	0	0.012	0.008
FSM0401-C3-1R-0135	94	108	138	3	0	0.012	0.008



D View

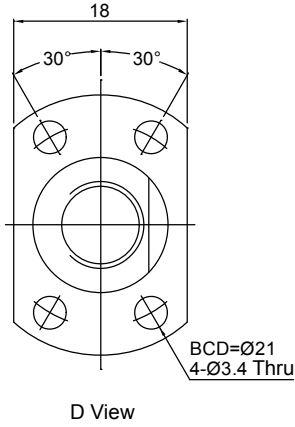
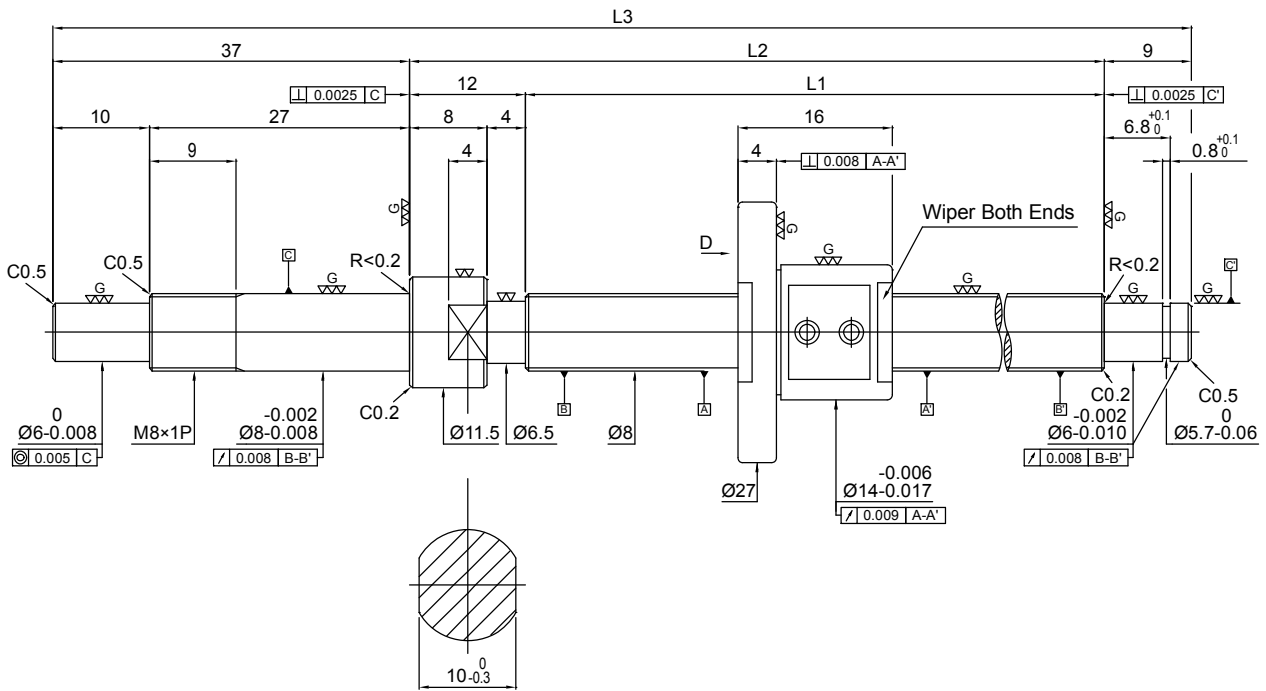
Specification of ball screw

Production Specification	With Preload	Without Preload
Number of Thread / Thread Direction	1/Right	
BCD	6.1	
Lead	1	
Ball Dia.	0.8	
Effective Turns (Circuit × Row)	2.5 × 1	
Lead Angle	2.99	
Dynamic Rate Load Ca (kgf)	58	
Static Rate Load Co (kgf)	100	
Axial Play	0	0.005 or less
Preloading Torque (kgf-cm)	0.01~0.15	0.03 or less

Unit: mm

Model No.	Screw Spindle (Shaft) Length			Accuracy Grade	Lead Accuracy		
	L1	L2	L3		Specified Travel (T)	Accumulated reference lead deviation E	Lead Deriation in random 300mm e ₃₀₀
FSM0601-C3-1R-0105	65	75	105	3	0	0.012	0.008
FSM0601-C3-1R-0135	95	105	135	3	0	0.012	0.008
FSM0601-C3-1R-0165	125	135	165	3	0	0.012	0.008

FSMC

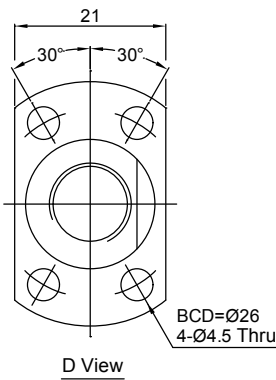
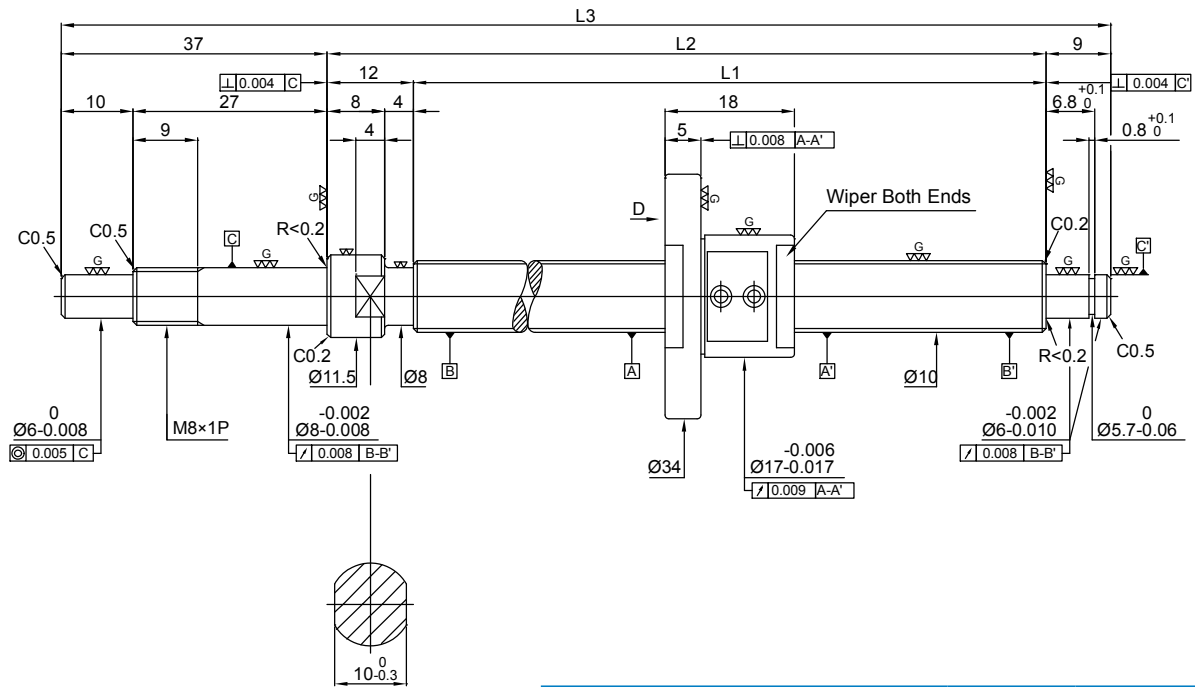
 Miniature Ballscrews
Screw Dia. $\varnothing 8$ Lead 01


Specification of ball screw

Production Specification	With Preload	Without Preload
Number of Thread / Thread Direction	1/Right	
BCD	8.1	
Lead	1	
Ball Dia.	0.8	
Effective Turns (Circuit \times Row)	2.5 \times 1	
Lead Angle	2.25	
Dynamic Rate Load Ca (kgf)	66	
Static Rate Load Co (kgf)	140	
Axial Play	0	0.005 or less
Preloading Torque (kgf-cm)	0.01~0.2	0.05 or less

Unit: mm

Model No.	Screw Spindle (Shaft) Length			Accuracy Grade	Lead Accuracy		
	L1	L2	L3		Specified Travel (T)	Accumulated reference lead deviation E	Lead Deriation in random 300mm e_{300}
FSM0801-C3-1R-0138	80	92	138	3	0	0.012	0.008
FSM0801-C3-1R-0168	110	122	168	3	0	0.012	0.008
FSM0801-C3-1R-0198	140	152	198	3	0	0.012	0.008
FSM0801-C3-1R-0248	190	202	248	3	0	0.012	0.008



Specification of ball screw

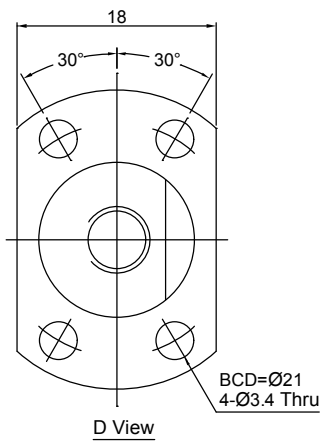
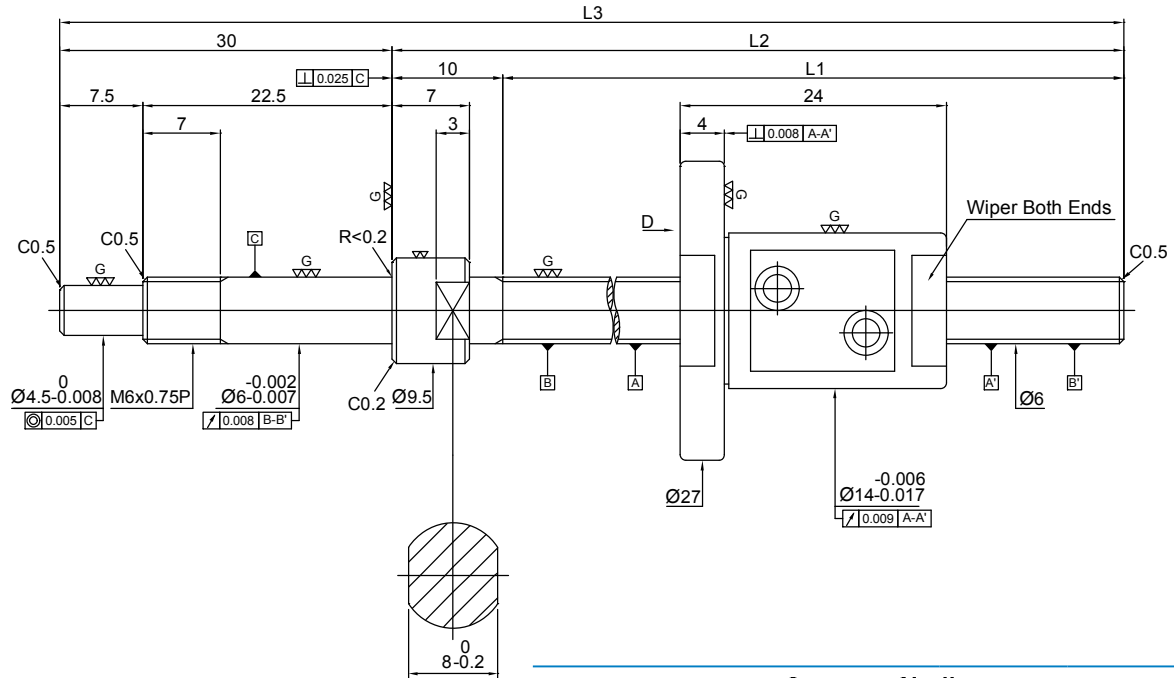
Production Specification	With Preload	Without Preload
Number of Thread / Thread Direction	1/Right	
BCD	10.1	
Lead	1	
Ball Dia.	0.8	
Effective Turns (Circuit × Row)	2.5 × 1	
Lead Angle	1.8	
Dynamic Rate Load Ca (kgf)	73	
Static Rate Load Co (kgf)	180	
Axial Play	0	0.005 or less
Preloading Torque (kgf-cm)	0.01~0.3	0.05 or less

Unit: mm

Model No.	Screw Spindle (Shaft) Length			Accuracy Grade	Lead Accuracy		
	L1	L2	L3		Specified Travel (T)	Accumulated reference lead deviation E	Lead Deriation in random 300mm e ₃₀₀
FSM1001-C3-1R-0168	110	122	168	3	0	0.012	0.008
FSM1001-C3-1R-0218	160	172	218	3	0	0.012	0.008
FSM1001-C3-1R-0268	210	222	268	3	0	0.012	0.008
FSM1001-C3-1R-0318	260	272	318	3	0	0.012	0.008
FSM1001-C3-1R-0368	310	322	368	3	0	0.013	0.008

FSMC

Miniature Ballscrews
Screw Dia. $\varnothing 6$ Lead 02

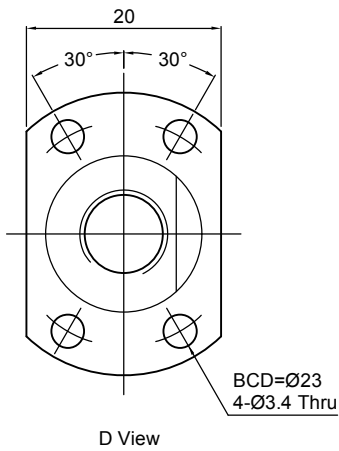
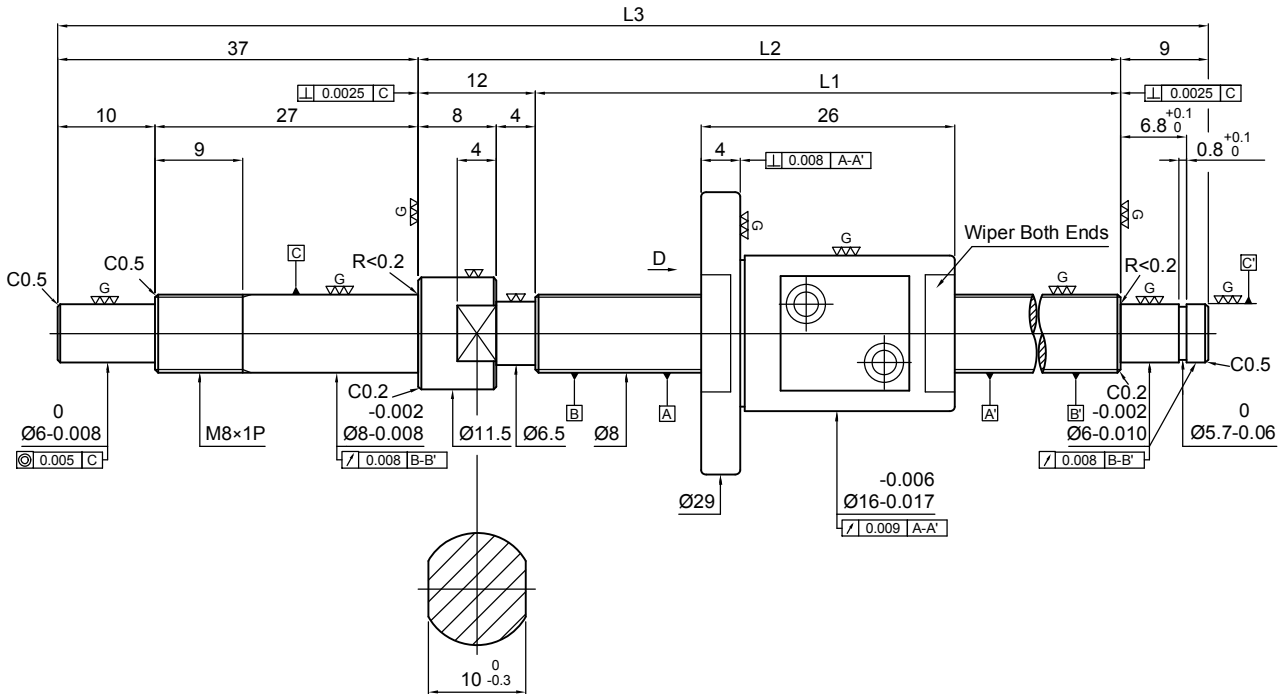


Specification of ball screw

Production Specification	With Preload	Without Preload
Number of Thread / Thread Direction	1/Right	
BCD	6.3	
Lead	2	
Ball Dia.	1.588	
Effective Turns (Circuit × Row)	2.5 × 1	
Lead Angle	5.77	
Dynamic Rate Load Ca (kgf)	160	
Static Rate Load Co (kgf)	210	
Axial Play	0	0.005 or less
Preloading Torque (kgf-cm)	0.01~0.2	0.05 or less

Unit: mm

Model No.	Screw Spindle (Shaft) Length			Accuracy Grade	Lead Accuracy		
	L1	L2	L3		Specified Travel (T)	Accumulated reference lead deviation E	Lead Deriation in random 300mm e_{300}
FSM0602-C3-1R-0105	65	75	105	3	0	0.012	0.008
FSM0602-C3-1R-0135	95	105	135	3	0	0.012	0.008
FSM0602-C3-1R-0165	125	135	165	3	0	0.012	0.008



Specification of ball screw

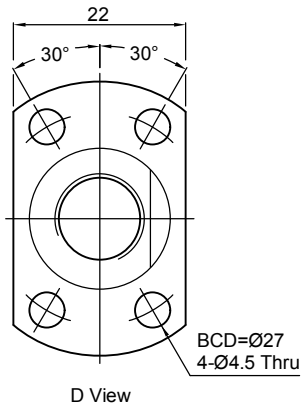
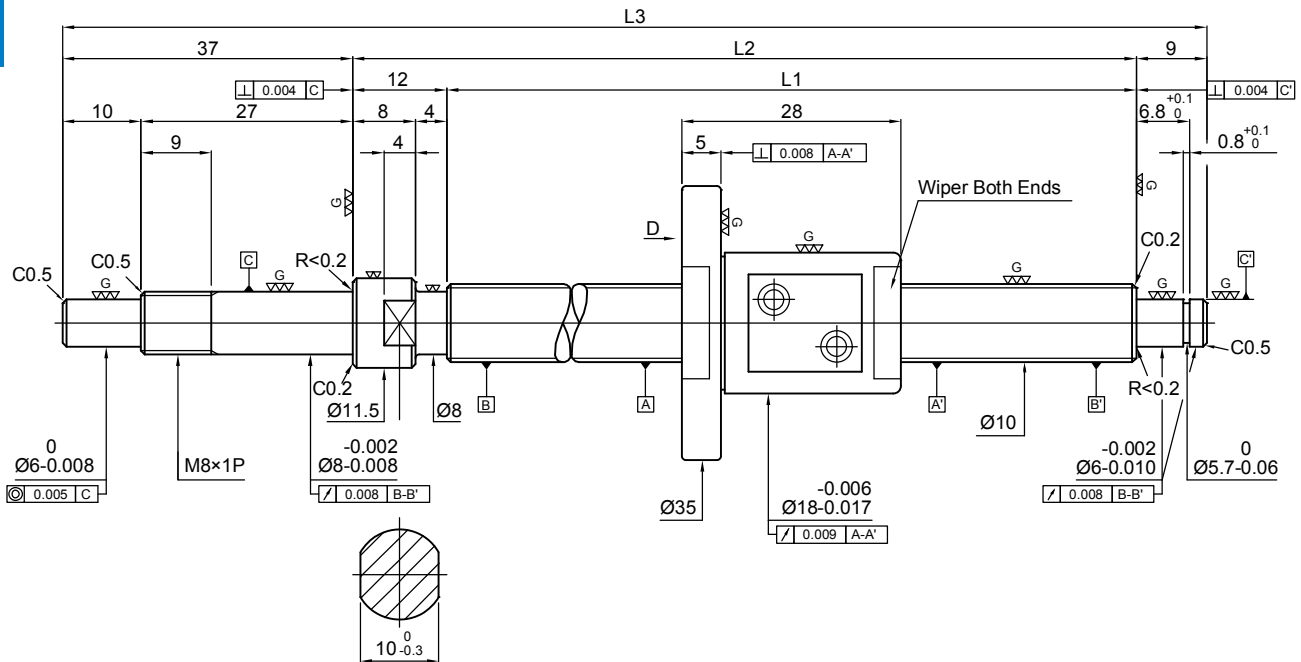
Production Specification	With Preload	Without Preload
Number of Thread / Thread Direction	1/Right	
BCD	8.3	
Lead	2	
Ball Dia.	1.588	
Effective Turns (Circuit × Row)	2.5 × 1	
Lead Angle	4.39	
Dynamic Rate Load Ca (kgf)	190	
Static Rate Load Co (kgf)	290	
Axial Play	0	0.005 or less
Preloading Torque (kgf-cm)	0.01~0.2	0.05 or less

Unit: mm

Model No.	Screw Spindle (Shaft) Length			Accuracy Grade	Lead Accuracy		
	L1	L2	L3		Specified Travel (T)	Accumulated reference lead deviation E	Lead Deriation in random 300mm e ₃₀₀
FSM0802-C3-1R-0138	80	92	138	3	0	0.012	0.008
FSM0802-C3-1R-0168	110	122	168	3	0	0.012	0.008
FSM0802-C3-1R-0198	140	152	198	3	0	0.012	0.008
FSM0802-C3-1R-0248	190	202	248	3	0	0.012	0.008

FSMC Miniature Ballscrews

Screw Dia. $\varnothing 10$ Lead 02

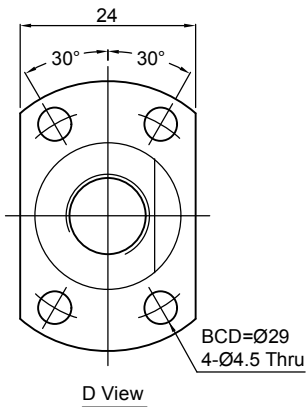
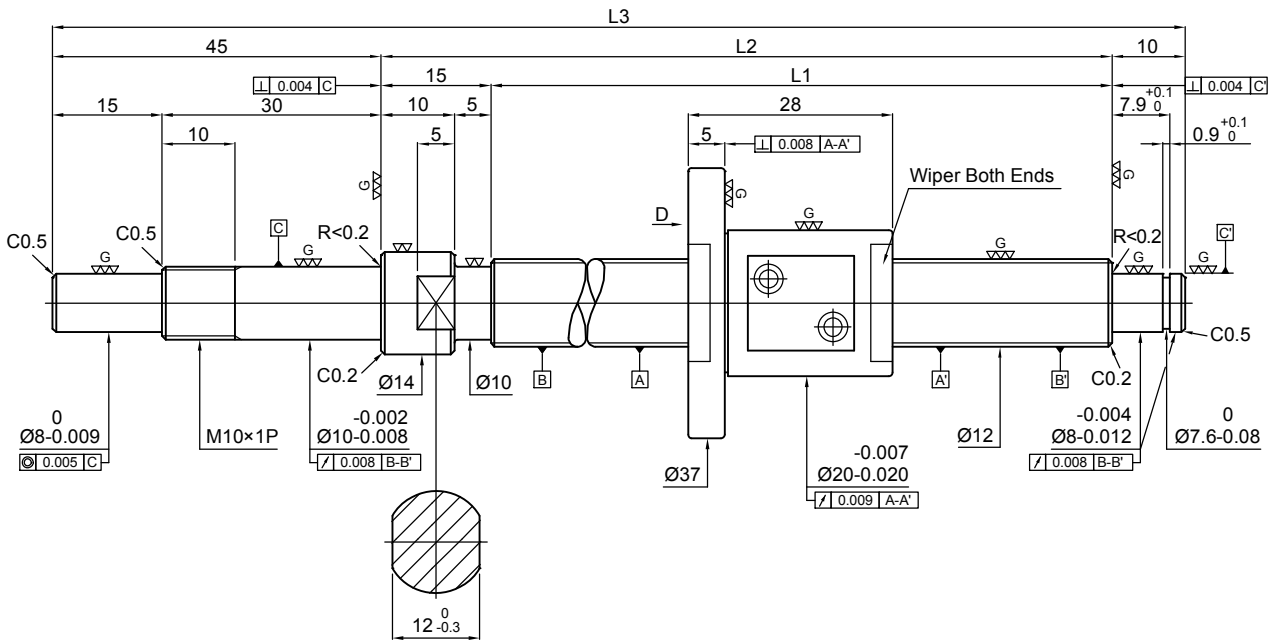


Specification of ball screw

Production Specification	With Preload	Without Preload
Number of Thread / Thread Direction	1/Right	
BCD	10.3	
Lead	2	
Ball Dia.	1.588	
Effective Turns (Circuit × Row)	2.5 × 1	
Lead Angle	3.54	
Dynamic Rate Load Ca (kgf)	220	
Static Rate Load Co (kgf)	370	
Axial Play	0	0.005 or less
Preloading Torque (kgf-cm)	0.01~0.3	0.05 or less

Unit: mm

Model No.	Screw Spindle (Shaft) Length			Accuracy Grade	Lead Accuracy		
	L1	L2	L3		Specified Travel (T)	Accumulated reference lead deviation E	Lead Deriation in random 300mm e_{300}
FSM1002-C3-1R-0168	110	122	168	3	0	0.012	0.008
FSM1002-C3-1R-0218	160	172	218	3	0	0.012	0.008
FSM1002-C3-1R-0268	210	222	268	3	0	0.012	0.008
FSM1002-C3-1R-0318	260	272	318	3	0	0.012	0.008
FSM1002-C3-1R-0368	310	322	368	3	0	0.012	0.008



Specification of ball screw

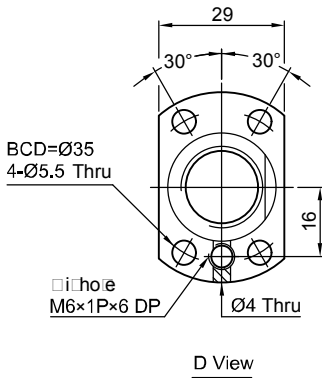
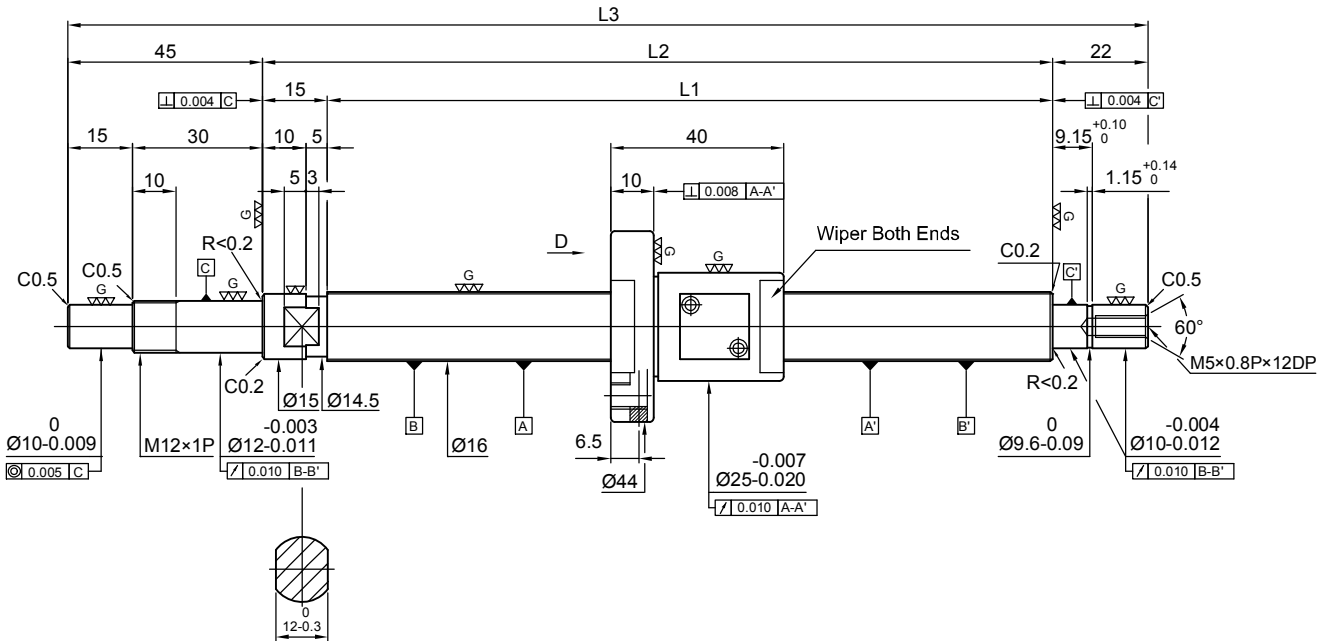
Production Specification	With Preload	Without Preload
Number of Thread / Thread Direction	1/Right	
BCD	12.3	
Lead	2	
Ball Dia.	1.588	
Effective Turns (Circuit × Row)	2.5 × 1	
Lead Angle	2.96	
Dynamic Rate Load Ca (kgf)	240	
Static Rate Load Co (kgf)	450	
Axial Play	0	0.005 or less
Preloading Torque (kgf-cm)	0.04~0.4	0.1 or less

Unit: mm

Model No.	Screw Spindle (Shaft) Length			Accuracy Grade	Lead Accuracy		
	L1	L2	L3		Specified Travel (T)	Accumulated reference lead deviation E	Lead Deriation in random 300mm e ₃₀₀
FSM1202-C3-1R-0180	110	125	180	3	0	0.012	0.008
FSM1202-C3-1R-0230	160	175	230	3	0	0.012	0.008
FSM1202-C3-1R-0280	210	225	280	3	0	0.012	0.008
FSM1202-C3-1R-0330	260	275	330	3	0	0.012	0.008
FSM1202-C3-1R-0380	310	325	380	3	0	0.012	0.008

FSMC

Miniature Ballscrews
Screw Dia. $\varnothing 16$ Lead 02



Specification of ball screw

Production Specification	With Preload	Without Preload
Number of Thread / Thread Direction	1/Right	
BCD	16.3	
Lead	2	
Ball Dia.	1.588	
Effective Turns (Circuit \times Row)	3.5 \times 1	
Lead Angle	2.24	
Dynamic Rate Load Ca (kgf)	360	
Static Rate Load Co (kgf)	850	
Axial Play	0	0.005 or less
Preloading Torque (kgf-cm)	0.05~0.5	0.15 or less

Unit: mm

Model No.	Screw Spindle (Shaft) Length			Accuracy Grade	Lead Accuracy		
	L1	L2	L3		Specified Travel (T)	Accumulated reference lead deviation E	Lead Deriation in random 300mm e_{300}
FSM1602-C3-1R-0221	139	154	221	3	0	0.012	0.008
FSM1602-C3-1R-0271	189	204	271	3	0	0.012	0.008
FSM1602-C3-1R-0321	239	254	321	3	0	0.012	0.008
FSM1602-C3-1R-0371	289	304	371	3	0	0.012	0.008
FSM1602-C3-1R-0471	389	404	471	3	0	0.013	0.008